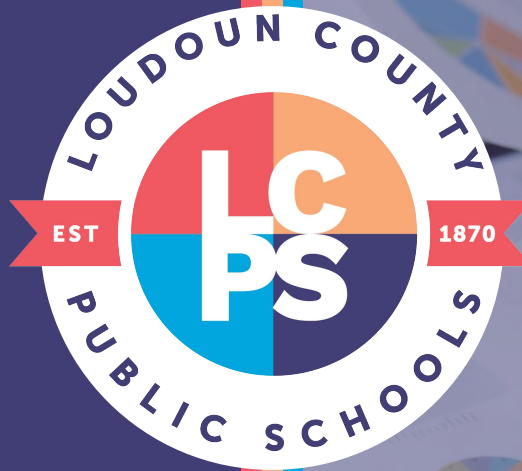


FY25 Business and Financial Services' Estimate of Needs January 25, 2024

Sharon Willoughby
Chief Financial Officer

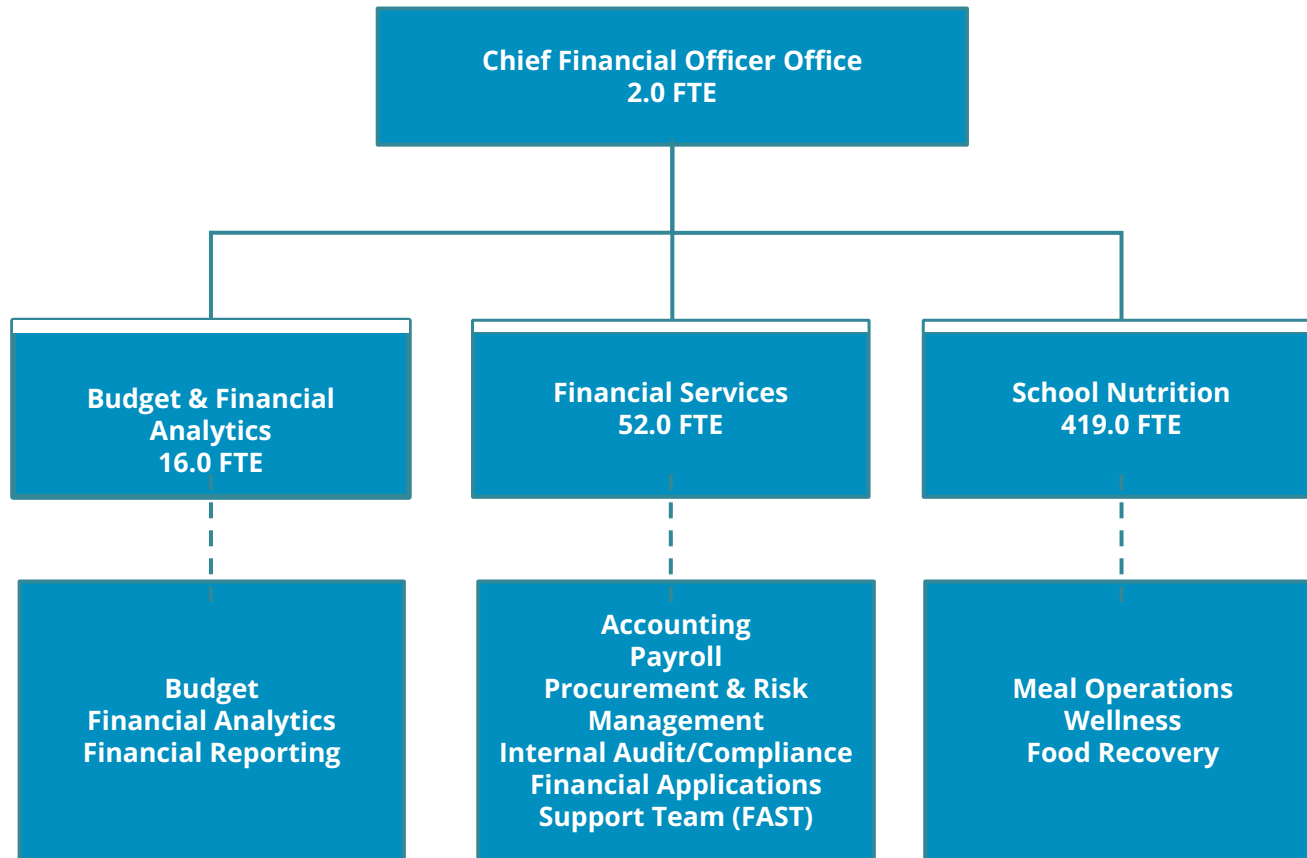


Business and Financial Services' Mission

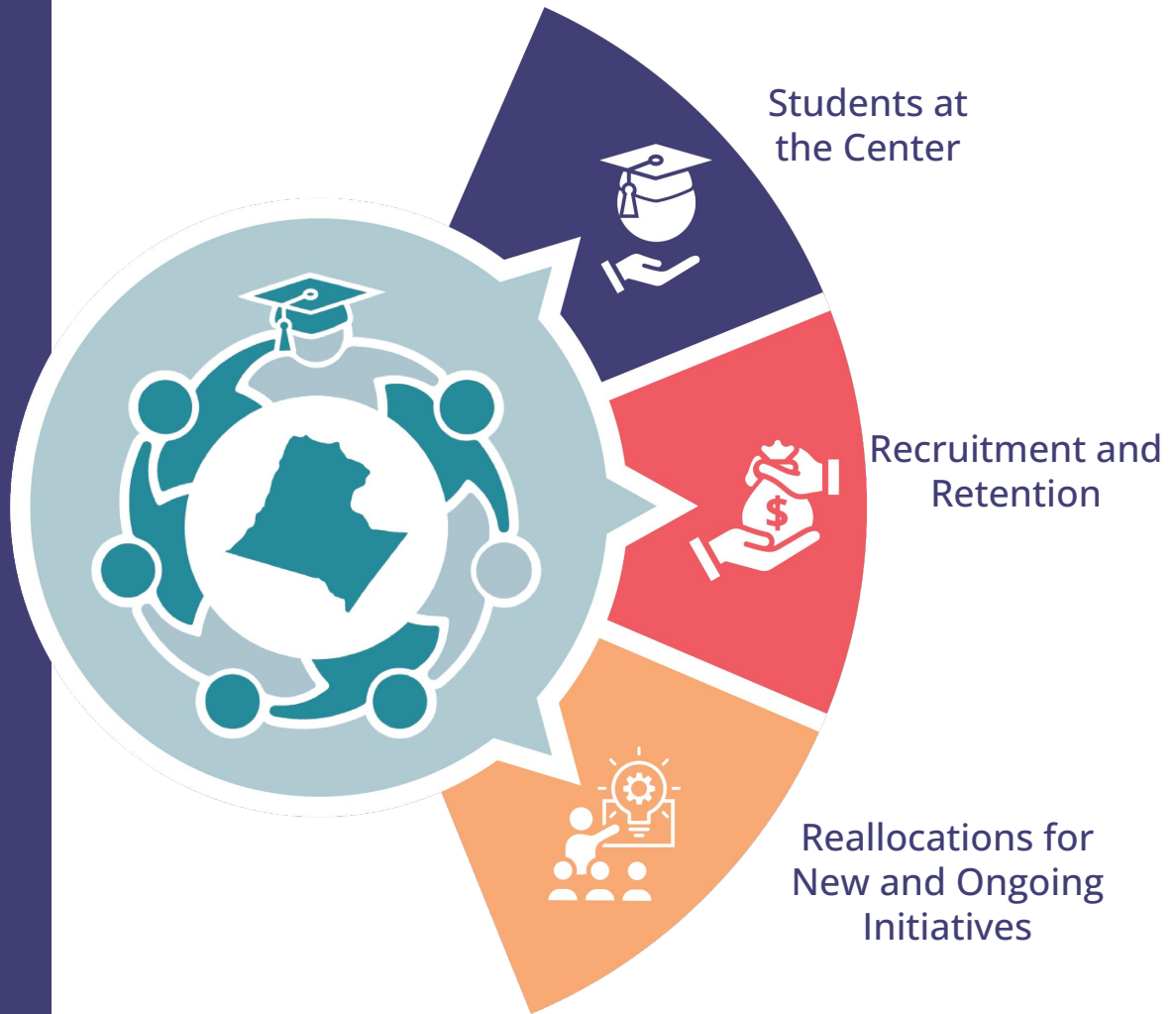
To provide support, leadership, and direction on financial matter to schools, central departments, and the School Board.

To ensure that financial matters are managed in a fiscally responsible manner consistent with the School Board budget and goals.





Superintendent FY25 Budget Priorities Support OneLCPS



Business & Financial Services

School Operating Fund

	FY24 Adopted Budget	FY25 Proposed Budget	FY25 to FY24 Change
Personnel	\$10,597,776	\$10,996,121	3.8%
Operations & Maintenance	1,441,207	1,474,533	2.3%
Capital Outlay	0.00	0.0	0.0%
Total	\$12,038,983	\$12,470,654	3.6%

Business and Financial Services



School Nutrition Fund



Efficient Business Operation

- ▶ Largest restaurant chain in Loudoun County
- ▶ Stringent USDA nutritional guidelines must be adhered to
- ▶ Federal and State mandated programs (i.e. free-and-reduced meals, summer feeding, community eligible program, etc)
- ▶ Annual net profit capped at no more than 3 months of expenditures
- ▶ Self-sufficient operation requiring no local subsidy



Business & Financial Services

School Nutrition Fund

	FY21 ACTUAL	FY22 ACTUAL	FY23 ACTUAL	FY24 BUDGET	FY25 BUDGET
SCHOOL NUTRITION FUND					
Fund Balance July 1,	13,017,197	23,502,755	37,705,812	32,269,895	28,247,601
REVENUE					
Cafeteria Sales	803,493	3,767,488	19,339,051	29,985,516	21,766,833
State Revenue	305,241	1,071,515	1,082,470	1,316,547	1,082,469
Federal Revenue	37,005,819	50,311,616	19,868,979	16,339,468	19,788,353
Total Revenue	38,114,553	55,150,618	40,290,499	47,641,531	42,637,655
TRANSFERS IN					
Total Funds Available	51,131,750	78,653,373	77,996,312	79,911,426	70,885,256
EXPENDITURES					
Personnel	15,926,265	19,487,437	21,037,436	25,381,201	25,979,696
Operating	11,702,731	20,787,492	21,487,342	19,643,050	22,279,550
Capital Outlay	-	672,631	3,201,638	6,639,574	525,000
Total Expenditures	27,628,996	40,947,560	45,726,417	51,663,825	48,784,246
Total Disbursements	27,628,996	40,947,560	45,726,417	51,663,825	48,784,246
Fund Balance June 30,	23,502,755	37,705,812	32,269,895	28,247,601	22,101,010



Efficient Business Operation-Revenues

FY25 Meal Prices increase \$0.20

	FY24	FY25
Breakfast (all levels)	\$2.10	\$2.30
Lunch - elementary	\$3.05	\$3.25
Lunch - secondary	\$3.15	\$3.35

	Elementary	Secondary
FY16	\$3.00	\$3.10
FY17	\$3.00	\$3.10
FY18	\$3.05	\$3.15
FY19	\$3.05	\$3.15
FY20	\$3.05	\$3.15
FY21	\$3.05	\$3.15
FY22	\$3.05	\$3.15
FY23	\$3.05	\$3.15
FY24	\$3.05	\$3.15
FY25	\$3.25	\$3.35

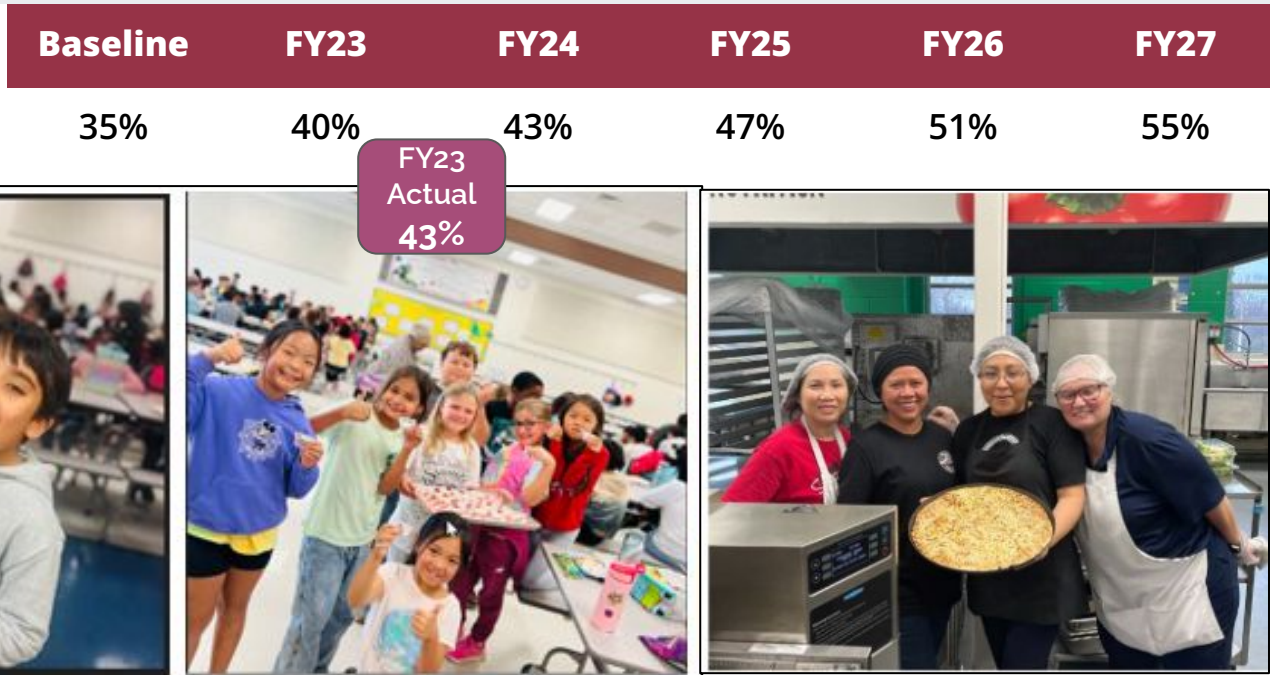




Empowered Students

1.3 Prioritize **Care for Students** by ensuring a safe and affirming learning environment for all.

F. Increase meal participation rates



LCPS supports legislative action to ensure meals are provided free for all students

Meal debt continues to be a concern for LCPS, as well as school divisions across the country

- FY23 over \$130k in meal debt
- FY24 to date \$102k



Efficient Business Operation-Expenses

Recruitment & Retention of Skilled Staff

- Began new SN Apprenticeship Program in FY24

17 vacant SN Worker Floater positions reduced

2 vacant School Nutrition Specialists reallocated to fund 1 Assistant Director



Community Eligibility Provision (CEP) Schools

Community Eligibility Provision (CEP) is an option created by the Healthy Hunger-Free Kids Act of 2010 that allows economically disadvantaged schools to offer *breakfast and lunch to all students at no charge* without collecting Free and Reduced Meal (FARM) applications.

- School eligibility established on data from federal assistance programs
- 40% minimum identified student percentage (ISP)
- LCPS has 11 CEP eligible school sites

Beginning in FY25, the ISP threshold is lowered to 25%, and 12 additional schools are expected to become eligible.

- May 1 - VDOE notify LCPS of newly qualified sites
- June 1 - LCPS notify VDOE of intent to implement CEP



**FY25
Business and
Financial Services'
Estimate of Needs
January 25, 2024**

Sharon Willoughby
Chief Financial Officer

